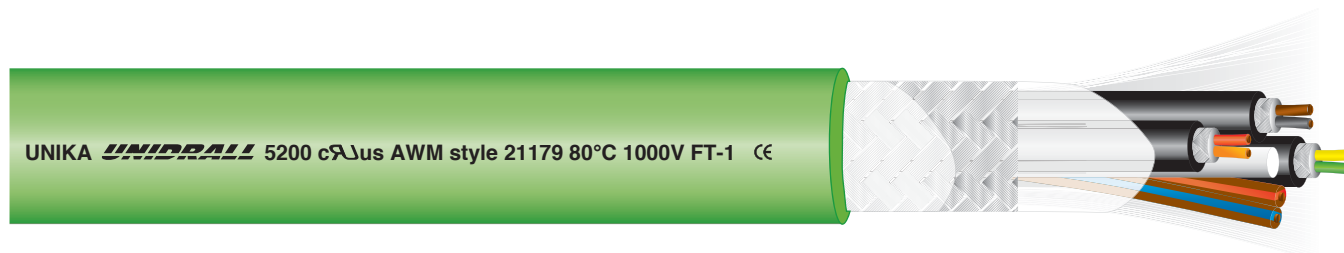




# UNIDRALL® 5200

Cavi per la trasmissione del segnale  
Signal transmission cables for Servo Motors



	Dati tecnici	Technical data
<b>Conduttore Conductor</b>	<b>1</b> Rame rosso secondo CEI EN 60228 (CEI 20-29) classe 6	Bare copper complying with CEI EN 60228 (CEI 20-29) class 6
<b>Isolamento ed identificazione Insulation and power core identification</b>	<b>2</b> TPE-E, TPE-O, PP, anime colorate con codice personalizzato	TPE-E, TPE-O, PP, coloured cores with customized code
<b>Schermatura totale Overall shielding</b>	<b>3</b> Treccia di fili di rame stagnato. Copertura maggiore 85%	Tinned copper wire braid. Coverage above 85%
<b>Guaina Jacket</b>	<b>4</b> PVC classe 43 secondo UL 1581. Colore verde RAL 6018	PVC class 43 according to UL1581. Colour green RAL 6018
<b>Tensione di lavoro Operating voltage</b>	30÷300 V	30÷300 V
<b>Tensione di prova Test voltage</b>	1000 Vcc	1000 Vcc
<b>Resistenza di isolamento Insulation resistance</b>	> 20 MΩ·km	> 20 MΩ·km
<b>Temperatura di lavoro Operating temperature</b>	Posa fissa -10 ÷ 80 °C	Fixed application -10 ÷ 80 °C
	Posa dinamica in catena -5 ÷ 80 °C	Dynamic application into chain -5 ÷ 80 °C
<b>Velocità [m/min] Speed</b>	250	250
<b>Accelerazione/ decelerazione [m/s²] Acceleration/ deceleration [m/s²]</b>	30	30
<b>Raggio minimo di curvatura Minimum bending radius</b>	Posa fissa 5 x diametro esterno	Fixed application 5 x outer diameter
	Posa dinamica in catena 7,5 x diametro esterno	Dynamic application into chain 7,5 x outer diameter
<b>Comportamento al fuoco Fire behaviour</b>	Prova di non propagazione fiamma UL 758 e prova FT-1 CSA C.22.2 n°210	Cable flame test per UL 758 and FT-1 test per CSA C.22.2 n°210
<b>Emissione gas alogenidrici Halogen gas emission</b>	≤ 18% IEC 60754, CEI EN 50267-2	≤ 18% IEC 60754, CEI EN 50267-2
<b>Resistenza agli oli industriali Industrial oil resistance</b>	IEC CEI EN 60811-2-1	IEC CEI EN 60811-2-1
<b>Resistenza all'acqua Water resistance</b>	IEC CEI EN 60811-1-3	IEC CEI EN 60811-1-3

Questi cavi si utilizzano per il controllo dei servomotori delle macchine utensili, in catene di montaggio, linee di produzione, ecc. tramite il segnale proveniente dall'encoder, revolver, tachimetrica

La schermatura è ottimizzata in modo da ridurre al minimo le interferenze elettromagnetiche provenienti dagli altri cavi e dalle apparecchiature elettroniche. Sono idonei ad essere installati in catene portacavi con buone prestazioni meccaniche. I cavi UNIDRALL 5200, previsti a catalogo, comprendono le tipologie più diffuse per applicazioni ai servomotori. Invitiamo ad interpellarci per ogni applicazione particolare.

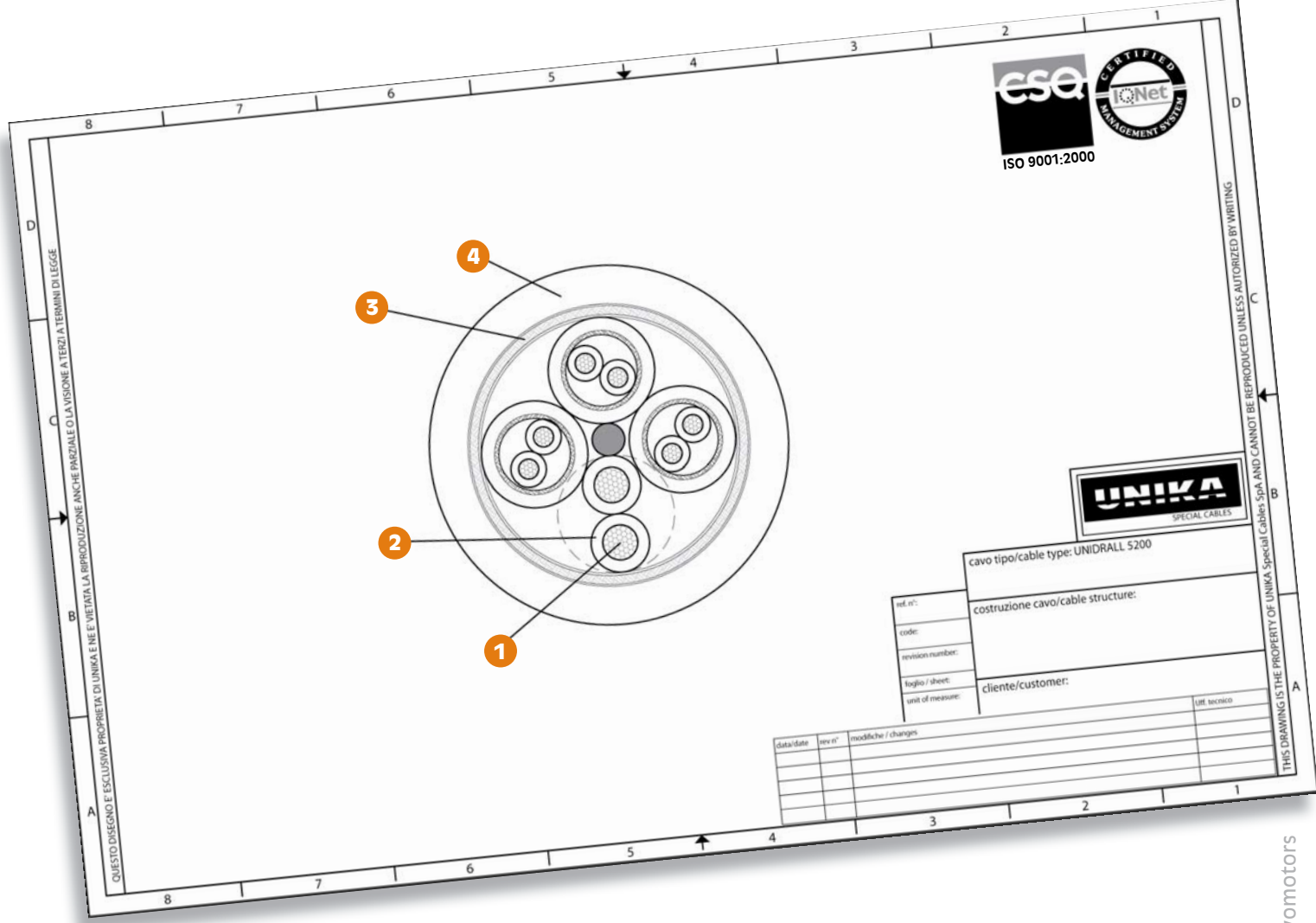
**Approvato DESINA.**  
**Approvato UL/CSA:**  
**80°C 1000V style 21179**

Such cables are suitable for controlling of servomotors of tooling machines, assembly lines, production lines, ecc. whenever advantages coming from cable at low capacitance are desirable.

Screening is optimised in order to minimize electromagnetic interferences coming from other cables and electronic equipment. They are suitable to be installed into travelling chain with good dynamic performances. UNIDRALL 5200 cables, inserted into the catalogue, include the most common applications to servomotors.

We invite you to consult us for every particular application.

**DESINA Approved.**  
**UL and CSA approvals:**  
**80°C 1000V style 21179**



codice code	formazione assembly	applicazione application	codice colori colour code	diametro diameter (mm)	massa Cu Cu mass (Kg/km)	massa cavo cable mass (Kg/km)
<b>3G001</b>	9x0,50	Taco INDRAMAT	DIN 47100	8,5	81	140
<b>3G002</b>	10x2x0,18	SIEMENS	DIN 47100	9,7	50	109
<b>3G003</b>	8x2x0,25	Resolver	DIN 47100	8,6	70	130
<b>3G004</b>	3x(2x0,14)+2x0,50+4x0,14+4x0,25	Resolver SIEMENS	(red-orange, brown-black, green-yellow) + (brown/red, brown/blue) + (blue, grey, white/black, white/yellow) + (brown/yellow, brown/grey, green/red, green/black)	9,7	92	145
<b>3G005</b>	3x(2x0,14)+2x0,50+4x0,14	Resolver SIEMENS	(red-orange, brown-black, green-yellow) + (brown/red, brown/blue) + (blue, grey, white/black, white/yellow)	8,8	60	100
<b>3G006</b>	3x(2x0,14)+2x0,50	Encoder HEIDENHAIN	(red-orange, brown-black, green-yellow) + (brown/red, brown/blue)	8,6	4,8	95
<b>3G007</b>	3x(2x0,14)+2x(0,50)	Encoder HEIDENHAIN	(red-orange, brown-black, green-yellow) + (brown/red, brown/blue)	8,8	75	130
<b>3G008</b>	3x(2x0,14)+2x1	Encoder HEIDENHAIN	(red-orange, brown-black, green-yellow) + (brown/red, brown/blue)	8,8	60	95
<b>3G009</b>	3x(2x0,14)+2x(1)	Encoder HEIDENHAIN	(red-orange, brown-black, green-yellow) + (brown/red, brown/blue)	9,5	80	126
<b>3G010</b>	4x2x0,25+2x0,50	Encoder INDRAMAT	(blue-red, green-grey, brown-red/green, violet-white/brown) + (white/brown, white/black)	8,0	65	82

codice code	formazione assembly	applicazione application	codice colori colour code	diametro diameter (mm)	massa Cu Cu mass (Kg/km)	massa cavo cablemass (Kg/km)
<b>3G011</b>	4x2x0,38+4x0,50	Encoder SIEMENS	(white/blue-orange, red-violet, blue-brown, black-yellow) + (green, white/black, white/red, white/yellow)	8,9	80	140
<b>3G012</b>	5x2x0,14+2x0,50	BAUMUELLER	(green-yellow, grey-pink, blue-red, black-violet, grey/pink-red/blue) + (blue, rosso)	8,0	51	105
<b>3G013</b>	4x2x0,25+2x1	Encoder INDRAMAT	(blue-red, green-grey, brown-red/green, violet-white/brown) + (white/brown, white/black)	8,8	75	101
<b>3G014</b>	10x0,14+2x0,50	HEIDENHAIN	(DIN 47100) + (white, brown)	7,2	38	83
<b>3G015</b>	10x0,14+4x0,50	HEIDENHAIN	(DIN 47100) + (white, brown, blue, black)	7,7	46	99
<b>3G016</b>	2x2x0,34	Encoder YASKAWA	DIN 47100	6,4	30	67
<b>3G017</b>	(2x0,34)+6x2x0,34+2x1	Encoder CONTROL TECHNIQUE	(white, brown) + (green-yellow, grey-pink, blue-red, black-violet, green/white-green/brown, grey/pink-blue/red) + (red, blue)	10,8	90	165
<b>3G018</b>	4x(2x0,34)	Resolver	(red-black, white-black, green-black, blue-black)	11,2	94	180
<b>3G019</b>	8x0,34		DIN 47100	7,0	40	82
<b>3G020</b>	2x0,18 + 5x0,34		(white-brown) + (green, yellow, grey, pink, blue)	7,1	34	67
<b>3G021</b>	6x2x0,14+2x0,50+1x0,50	Encoder BALDOR	(grey-grey/black, yellow-yellow/black, pinkpink/black, brown, brown/white, green-green/white, violet-violet/white) + (blue, red) + orange	8,9	55	111
<b>3G022</b>	(2x0,50)+2x(2x0,14)+1x0,50	Resolver SSI BALDOR	(red-blue) + (green-yellow, pink-grey) + orange	7,6	50	95
<b>3G023</b>	2x(2x0,14)+2x0,50+2x2x0,14+1x0,50	ENDAT BALDOR	(violet, violet-white) + (red, blue) + (pink, pink/black, brown, brown/black) + orange	8,7	53	115

<b>codice code</b>	<b>formazione assembly</b>	<b>applicazione application</b>	<b>codice colori colour code</b>	<b>diametro diameter (mm)</b>	<b>massa Cu Cu mass (Kg/km)</b>	<b>massa cavo cablemass (Kg/km)</b>
<b>3G024</b>	3x(2x0,25)	Resolver	DIN 47100	9,1	72	105
<b>3G025</b>	4x(2x0,25)	Resolver	DIN 47100	10,2	86	125
<b>3G026</b>	6x(2x0,25)	Resolver	DIN 47100	12,3	111	170
<b>3G027</b>	8x(2x0,25)	Resolver	DIN 47100	15,6	150	235
<b>3G029</b>	4x2x0,14+4x0,50	Encoder HEIDENHAIN	(green-brown)+(yellow-violet)+ (pink-grey)+(red-black) + white, blue, white/green, brown/green	8,0	60	80
<b>3G030</b>	6x0,34		DIN 47100	6,1	31	70
<b>3G032</b>	12x0,25	Tachimetrica	DIN 47100	6,9	43	90
<b>3G034</b>	4x2x0,25	Resolver DENAHER	(white-brown, green-yellow, grey-pink, blue-red)	7,2	32	76
<b>3G035</b>	2x0,34		(red, white)	4,7	15	35
<b>3G042</b>	(4x0,14)+4x2x0,14+4x0,50	HEIDENHAIM	(red-black, grey-pink, yellow-violet, brown-green)	8,0	60	100
<b>3G050</b>	(6x0,14)+4x2x0,14+4x0,50	Encoder BOSCH	(Green/black, yellow/black, blue/black, red/black, white/black, pink/black)+ (brown-green, red-black, pink-grey, violet-yellow)+(white, white/green, blue, brown/green)	9,5	90	240
<b>3G051</b>	8x2x0,18		DIN 47100	7,8	55	110