

KU® 44R

Cavi unipolari con tensione nominale 600V per alimentazione delle pompe sommerse
 Thermoset insulated wire rated 600V to feed submersible pumps

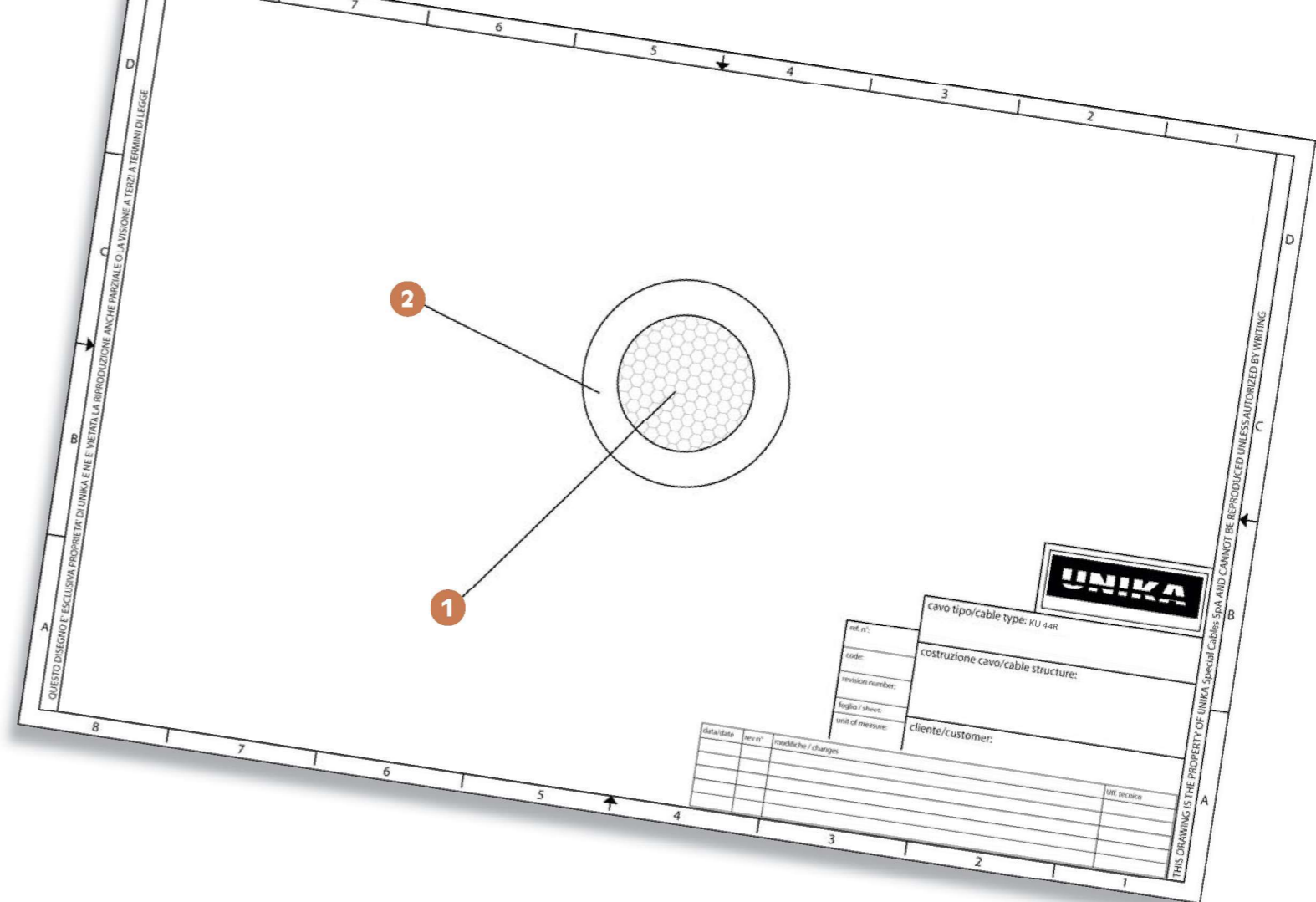


UNIKA (Italy) - E325307 (UL) SUBMERSIBLE PUMP CABLE xx AWG Type RHW-2 or RHW or RHH or SIS 600V



	Dati tecnici	Technical data
Conduttore Conductor	1 Trefolo a corda di rame rosso o stagnato	Bare or tinned copper, bunch stranded
Isolamento Insulation	2 XLPE ritardante la fiamma halogen - Free secondo tab.11 UL 44 (tipo XL)	Flame retardant cross-linked halogen free compound according to table 11 UL 44 (type XL)
Identificazione Core identification	Vari colori	Different colours
Riunitura delle anime Single core assembly for "Submersible Pump Cable"	Da 2 a 6 anime riunite insieme senza guaina esterna	From two up to six wires of type RHH or RHW or RHW-2 cabled together without overall jacket
Marcatura Marking	UNIKA (Italy) - E325307 (UL) SUBMERSIBLE PUMP CABLE xx AWG Type RHW-2 or RHW or RHH 600V - production date - traceability code	UNIKA (Italy) - E325307 (UL) SUBMERSIBLE PUMP CABLE xx AWG Type RHW-2 or RHW or RHH 600V - production date - traceability code
Temperatura minima d'installazione Minimum installation temperature	-25°C	- 25°C
Temperatura minima di funzionamento Minimum operating temperature	-40°C	- 40°C
Raggio minimo di curvatura Minimum bending radius	3D	3D
Comportamento alla fiamma Fire behaviour	Test orizzontale	Horizontal flame test
Campo di approvazione Range of approval	Da AWG14 fino al kcmil 2000 in ogni colore sezioni intermedie quali AWG13, AWG11,...sono disponibili	From AWG14 up to kcmil 2000, in any colour intermediate cross-section, such as AWG13, AWG11..., are available

tipo type	tensione operating voltage	temperatura operating temperature
RHW-2	600 V	90°C wet or dry
RHW	600 V	75°C wet or dry
RHH	600 V	90° dry



Code	Cross-section [AWG]	Nominal outer diameter [mm]	Copper weight [Kg/km]	Minimum insulation resistance at 15°C [GΩ.m]	Electrical resistance Ω/km] at 20°C		Inductance [mH/km]	Ampacity at air temperature 30° based on NEC [A]
					Untinned	Tinned		
8B019	14	4,2	21	810	8,70	9,24	0,104	25
8B01A	12	4,7	33	680	5,48	5,81	0,092	30
8B01X	11	5,0	45	560	4,35	4,61	0,086	35
8B01B	10	5,3	52	560	3,45	3,66	0,081	40
8B01W	9	6,4	70	650	2,73	2,90	0,089	45
8B01D	8	6,9	81	650	2,16	2,30	0,083	55
8B01V	7	7,4	110	540	1,71	1,79	0,078	60
8B01D	6	7,9	125	540	1,37	1,42	0,075	75
8B01Z	5	8,8	170	450	1,08	1,12	0,070	80
8B01F	4	9,6	201	450	0,857	0,890	0,064	95
8B01U	3	10,3	281	400	0,679	0,707	0,062	110
8B01G	2	11,0	317	370	0,539	0,560	0,054	130
8B01H	1	13,2	400	390	0,431	0,449	0,062	150
8B01R	1/0	14,2	500	350	0,342	0,355	0,058	170
8B01J	2/0	15,5	631	320	0,271	0,282	0,055	195
8B01S	3/0	17,0	792	290	0,215	0,223	0,052	225
8B01T	4/0	18,9	996	260	0,170	0,177	0,049	260

Tolerance on outer diameter	Outer diameter [mm]
± 0,20	≤ 5
± 0,25	from 5,1 up to 10
± 0,30	from 10,1 up to 15
± 0,40	from 15,1 up to 25